



**REGIONAL SPECIALISED METEOROLOGICAL CENTRE-TROPICAL CYCLONES, NEW DELHI
TROPICAL WEATHER OUTLOOK**

DEMS-RSMC TROPICAL CYCLONES NEW DELHI DATED 28.10.2021

TROPICAL WEATHER OUTLOOK FOR NORTH INDIAN OCEAN (THE BAY OF BENGAL OF BENGAL AND ARABIAN SEA) VALID FOR NEXT 120 HOURS ISSUED AT 0600 UTC OF 28.10.2021 BASED ON 0300 UTC OF 28.10.2021.

BAY OF BENGAL:

YESTERDAY'S LOW PRESSURE AREA OVER CENTRAL PARTS OF SOUTH BAY OF BENGAL NOW LAYS OVER SOUTHWEST BAY OF BENGAL OFF SRILANKA COAST AND THE ASSOCIATED CYCLONIC CIRCULATION EXTENDS UPTO 3.1 KM ABOVE MEAN SEA LEVEL. IT IS LIKELY TO MOVE WESTWARDS DURING NEXT 48 HOURS.

AS PER SATELLITE IMAGINARY, SCATTERED LOW AND MEDIUM CLOUDS WITH EMBEDDED MODERATE TO INTENSE CONVECTION LAY OVER SOUTHWEST BAY OF BENGAL & NEIGHBOURHOOD IN ASSOCIATION WITH LOW PRESSURE AREA OVER THE REGION.

SCATTERED LOW AND MEDIUM CLOUDS WITH EMBEDDED INTENSE TO VERY INTENSE CONVECTION OVER NORTH BAY OF BENGAL WESTCENTRAL BAY OF BENGAL SOUTH WEST BAY OF BENGAL AND SOUTH ANDAMAN SEA. SCATTERED LOW AND MEDIUM CLOUDS WITH EMBEDDED MODERATE TO INTENSE CONVECTION LAY OVER SOUTHEAST BAY OF BENGAL AND NORTH ANDAMAN SEA

PROBABILITY OF CYCLOGENESIS (FORMATION OF DEPRESSION) DURING NEXT 120 HRS:

24 HOURS	24-48 HOURS	48-72 HOURS	72-96 HOURS	96-120 HOURS
NIL	NIL	NIL	NIL	NIL

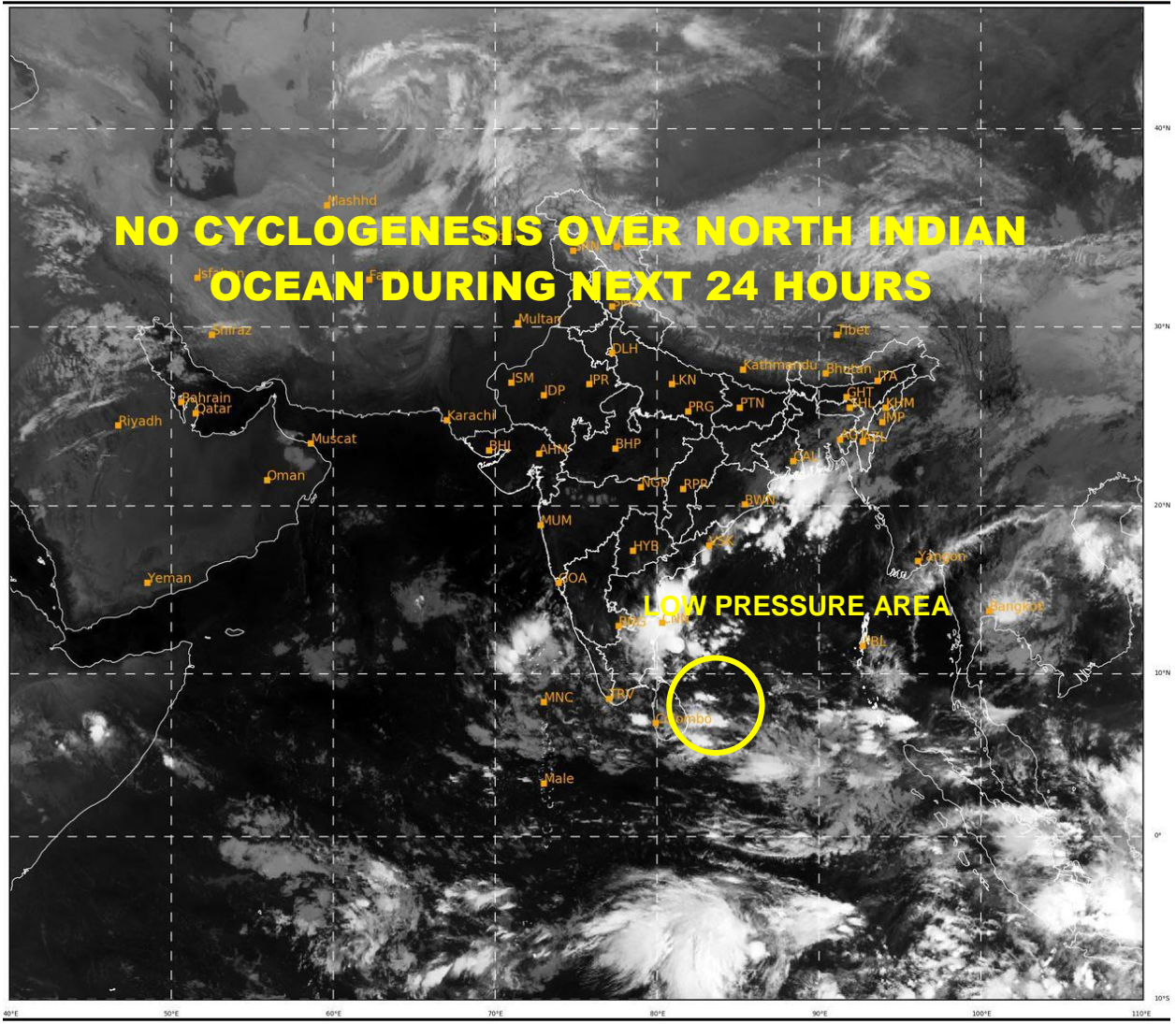
ARABIAN SEA:

SCATTERED LOW AND MEDIUM CLOUDS WITH EMBEDDED MODERATE TO INTENSE CONVECTION LAY OVER EASTCENTRAL & SOUTHEAST ARABIAN SEA AND COMORIN REGION.

PROBABILITY OF CYCLOGENESIS (FORMATION OF DEPRESSION) DURING NEXT 120 HRS:

24 HOURS	24-48 HOURS	48-72 HOURS	72-96 HOURS	96-120 HOURS
NIL	NIL	NIL	NIL	NIL

REMARKS: NIL



518

939

IMD, DELHI